



TUDOR UNDER SINK 10L

Order Code 21102

Open outlet, single point of use, under sink storage water heater with external temperature control, incorporating a frost protection setting to protect the heater when not in use and a low watts density spiral heating element for rapid recovery and long life.



Manufacturing Code	21102
--------------------	-------

Capacity	10 litres
----------	-----------

Water Pressure	Min 50kPa - Max 350kPa
----------------	------------------------

Water Connection	"12.7mm BSP "
------------------	---------------

Power Rating	2kw 220-240V 50/60 Hz
--------------	-----------------------

Dimensions	H440mm x W310mm x D265mm
------------	--------------------------

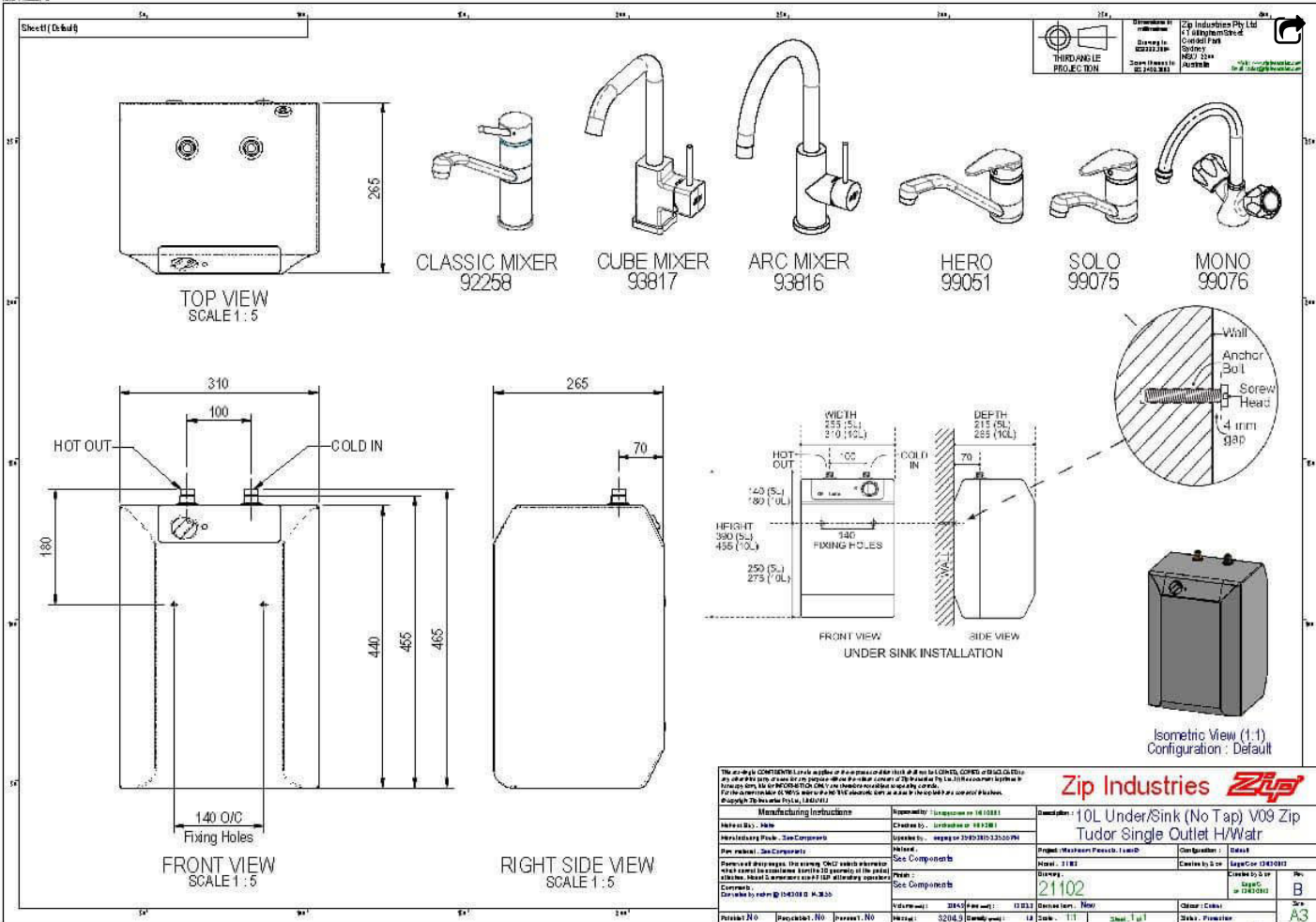
Product Approvals	WaterMark, CE,
-------------------	----------------

Warranty	12 months
----------	-----------

Installation Requirements

Must be installed by a suitably qualified person in accordance with manufacturers instructions and with all relevant plumbing and electrical regulations

Installation Detail




THIRD ANGLE PROJECTION
 Zip Industries Pty Ltd
 1/1 Alibonhom Drive
 Crows Nest NSW 1585
 Sydney NSW 1585
 Tel: 02 9439 3833
 Fax: 02 9439 3834
 Email: sales@zipindustries.com.au

CLASSIC MIXER 92258 CUBE MIXER 93817 ARC MIXER 93816 HERO 99051 SOLO 99075 MONO 99076

TOP VIEW
SCALE 1:5

FRONT VIEW
SCALE 1:5

RIGHT SIDE VIEW
SCALE 1:5

UNDER SINK INSTALLATION

Isometric View (1:1)
Configuration: Default

The user shall COMPLY with the conditions of the manufacturer's instructions and shall not be LIABLE for any damage or injury to persons or property arising from the use of this product. Zip Industries Pty Ltd is not responsible for any damage or injury to persons or property arising from the use of this product. Zip Industries Pty Ltd is not responsible for any damage or injury to persons or property arising from the use of this product.

Manufacturing Instructions		Supplement: 1 (suppression on 18 10381)	Manufacturer: 10L Under/Sink (No Tap) V09 Zip Tudor Single Outlet H/Watr
Material No. - Note	Created by: 1812281	Checked by: 1812281	Original: 1812281
Manufacturing Point - See Components	Issued by: 1812281	Approved by: 1812281	Checked by: 1812281
Plan released - See Components	Released by: 1812281	See Components	Checked by: 1812281
Released drawings: This drawing (DWG) shall be controlled and issued in accordance with the 2D drawing control system of the user. Release of drawings shall be controlled and issued in accordance with the 2D drawing control system of the user.	Released by: 1812281	See Components	Checked by: 1812281
Comments: Drawn by: 1812281	Checked by: 1812281	See Components	Checked by: 1812281
Part No	Part No	Part No	Part No
Material: S2043	Quantity: 1	Unit: 1	Unit: 1
Scale: 1:1	Sheet: 1 of 1	Sheet: 1 of 1	Sheet: 1 of 1
Drawn: 1812281	Checked: 1812281	Released: 1812281	Released: 1812281
Drawn: 1812281	Checked: 1812281	Released: 1812281	Released: 1812281

